

Our RSD Series 1U, 2U and 4U fiber enclosures provide high-density, low dB loss connections. They're ideal for structured cabling environments, open racks in telecom closets or any areas where the front protection might be needed.

The RSD Series enclosures support up to 96 fibers in 1U, 192 fibers in 2U and 384 fibers in 4U. Their modular design allows for multiple connector types within each enclosure, and their LC and SC couplers utilize state-of-the-art spring stabilizing for minimal coupler movement. Their slide-out, tilt-down drawer provides easy access to modules. Plus, they come standard with a lifetime warranty.

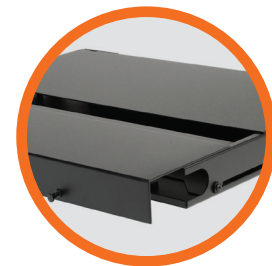
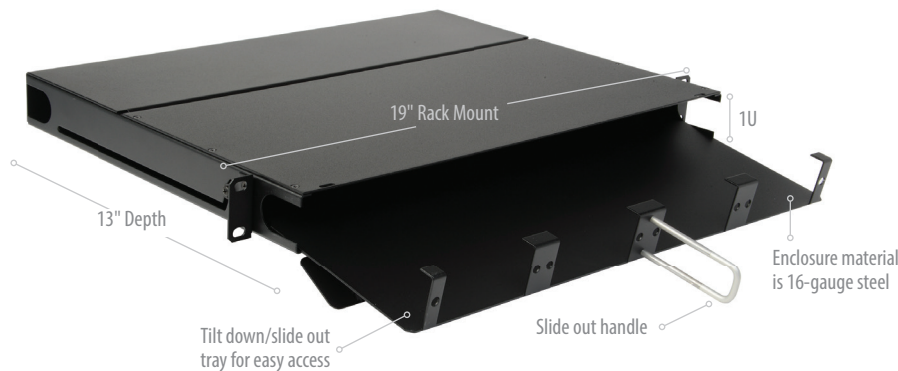
## Features

- Low loss components allow flexibility in fiber network design
- 13-inch depth frees up room in rack
- Light weight allows for easier mounting
- Label card enables easy port identification
- Internal cable managers maintain proper bend radius
- Rugged design helps fiber to remain secure
- Designed to accept 4, 8 or 16 adapter panels and/or modules
- Available with LC, SC, ST, MT-RJ, RJ45 or MTP® adapters

## 1U Enclosure

Accepts 4 modules and/or adapter panels

Enclosure CBX-FE-1U4-1160  
1U rack mount fiber distribution enclosure

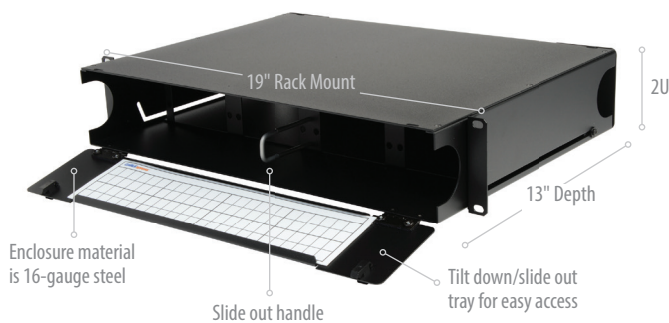


1U has removable rear lid/door for rear cable management access

## 2U Enclosure

Accepts 8 modules and/or adapter panels

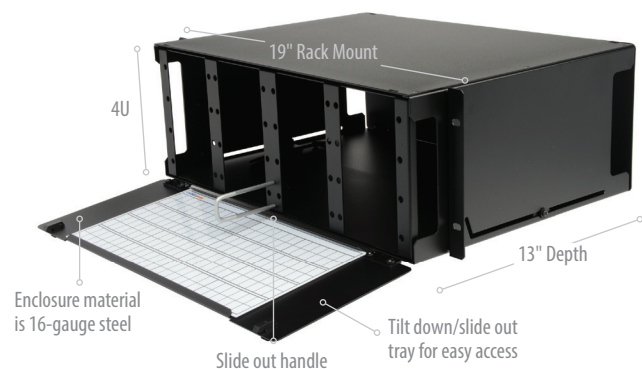
Enclosure CBX-FE-2U8-1160  
2U rack mount fiber distribution enclosure



## 4U Enclosure

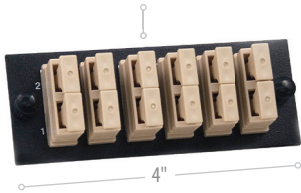
Accepts 16 modules and/or adapter panels

Enclosure CBX-FE-4U16-1160  
4U rack mount fiber distribution enclosure



## Adapter panels

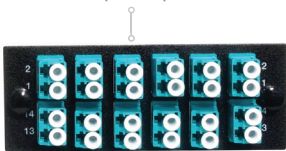
SC Duplex Couplers



### SC Adapter Panels

- CBX-FE-F12SCAZ - 12 Fiber SC Zirconia Aqua 10 GIG
- CBX-FE-F12SCAP - 12 Fiber SC Aqua 10 G IG
- CBX-FE-F12SCTZ - 12 Fiber SC Zirconia 62.5/125
- CBX-FE-F12SCTP - 12 Fiber SC 62.5/125
- CBX-FE-F12SCBZ - 12 Fiber SC Zirconia 9/125

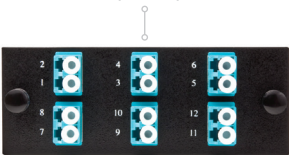
LC Duplex Couplers



### LC Adapter Panels

- CBX-FE-F24LCAZ - 24 FIBER LC Zirconia Aqua 10 GIG
- CBX-FE-F24LCAP - 24 FIBER LC Aqua 10 G IG
- CBX-FE-F24LCTZ - 24 FIBER LC Zirconia 62.5/125
- CBX-FE-F24LCTP - 24 FIBER LC 62.5/125
- CBX-FE-F24LCBZ - 24 FIBER LC Zirconia 9/125
- CBX-FE-F24LCGZ - 24 FIBER LC APC Zirconia 9/125

LC Duplex Couplers



### LC Half Density Adapter Panels

- CBX-FE-F12LCAZ - 12 FIBER LC Zirconia Aqua 10 GIG
- CBX-FE-F12LCAP - 12 FIBER LC Aqua 10 G IG
- CBX-FE-F12LCTZ - 12 FIBER LC Zirconia 62.5/125
- CBX-FE-F12LCTP - 12 FIBER LC 62.5/125
- CBX-FE-F12LCBZ - 12 FIBER LC Zirconia 9/125
- CBX-FE-F12LCGZ - 12 FIBER LC APC Zirconia 9/125

MT-RJ Couplers



### MT-RJ Adapter Panel

- CBX-FE-F12MJK - 12 Fiber MT-RJ

ST Couplers



### ST Adapter Panels

- CBX-FE-F06STTP - 6 Fiber ST 62.5/125
- CBX-FE-F06STBZ - 6 Fiber ST Zirconia 9/125

MTP Couplers



### MTP® Adapter Panel

- CBX-FE-F06MPK - 6 Port MTP® Adapter Panel

### Blank Panel

- CBX-FE-FBLANK - Blank Panel

## Modules

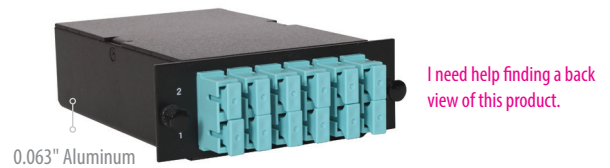
### LC Duplex 3-Inch Modules

- CBX-FE-M24LCAZ - ECR1043a - 24 Fiber LC/2 MTP® Zirconia Aqua 10 GIG
- CBX-FE-M24LCAP - ECR1043a - 24 Fiber LC/2 MTP® Aqua 10 G IG
- CBX-FE-M24LCTZ - ECR1043a - 24 Fiber LC /2 MTP® Zirconia 62.5/125
- CBX-FE-M24LCTP - ECR1043a - 24 Fiber LC/2 MTP® 62.5/125
- CBX-FE-M24LCBZ - ECR1043a - 24 Fiber LC/2 MTP® Zirconia 9/125



### SC Duplex 3-Inch Modules

- CBX-FE-M12SCAZ - ECR1043a - 12 Fiber SC/MTP® Zirconia Aqua 10 GIG
- CBX-FE-M12SCAP - ECR1043a - 12 Fiber SC/MTP® Aqua 10 G IG
- CBX-FE-M12SCTZ - ECR1043a - 12 Fiber SC/MTP® Zirconia 62.5/125
- CBX-FE-M12SCTP - ECR1043a - 12 Fiber SC/MTP® 62.5/125
- CBX-FE-M12SCBZ - ECR1043a - 12 Fiber SC/MTP® Zirconia 9/125



### LC Low Density Duplex 3-Inch Modules

- CBX-FE-M12LCAZ - ECR1043a - 12 Fiber LC/2 MTP® Zirconia Aqua 10 GIG
- CBX-FE-M12LCAP - ECR1043a - 12 Fiber LC/2 MTP® Aqua 10 G IG
- CBX-FE-M12LCTZ - ECR1043a - 12 Fiber LC /2 MTP® Zirconia 62.5/125
- CBX-FE-M12LCTP - ECR1043a - 12 Fiber LC/2 MTP® 62.5/125
- CBX-FE-M12LCBZ - ECR1043a - 12 Fiber LC/2 MTP® Zirconia 9/125

